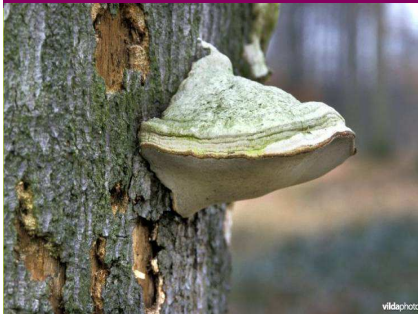


CURSUS



European Chainsaw Certificate in Europe and Belgium

Kris Hofkens, Inverde

2/3/18 Aifor Torino



EFESC

European forestry and
environmental skills council



A bit of history of ECC

How did the project started?

International Congress of Forestry in Annecy 2007

Subjects on the conference:

- Safety and health
- Increase of mobility of workers
- Skilled/ competent worker



Specific attention to the use of
the chainsaw



Mobility of workers



Many country's – many different certificates



Training



Differences between country's



= ??



Certificates are difficult to compare

First Conference in Brussels

European Conference European Standard in Chainsaw Qualification

19 > 20 June 2008

:: BRUSSELS ::



This conference is organised by

Inverde vzw | Tom Embo
Duboislaan 2
1560 Hoellaart • BELGIUM
info@inverde.be
www.inverde.be

IPC Groene Ruimte | Roland Tromp
Koningsweg 35 • Postbus 393
6800 A.J. Arnhem • NETHERLANDS
r.tromp@ipcgroen.nl
www.ipcgroen.nl



and is supported by

European Network
of Forest Entrepreneurs

Joint FAO/ECE/ILO
Experts Network



Participating country's



EU organisations

Certificators

Industry

Branch organisations

Training centres



Results of the conference



Development of chainsawcertificates



Build up an organization witch can safeguard qualitycontrol



Existing certification systems can be remained



Existing systems can be compared with the European minimumstandards and if so: extra ECC logo can be put on the National certificates



New system for country's without national standards



A European project is launched to fund the start-up

Standards committee with: trainers/ instructors/ advisers



Meetings in:
Danmark
Spain
Tsjech Republic
Belgium
The Netherlands

Goal:

- Agreement on the European minimum standards for safe, ergonomic and effective use of the chainsaw = ECS
- Compare them with existing National standards
- Develop criteria to have a uniform competention assessement
- This all to achief a European Chainsaw Certificate



European chainsaw standards:

ECS 1 - maintenance and crosscutting



ECS 2 – basic felling



ECS 3 – advanced felling



ECS 4 – windblown trees



Assessors workshop

November 2017, Arnhem

Goal:

- Exchange of experiences
- All looking in same direction
- ECC assessment criteria and tasks safeguard uniformity and a strong qualitylabel
- Answers on questions mostly to be find in EC-Standards, handbook or appendices
- > 30 participants out of 8 country's

4 Years in search in Europe to find solid support



ECC

European Chainsaw Certificate



European Forestry and Environment Skills Council European Chainsaw Certificat



What is EFESC?

- The umbrella organization to manage and empower certificates of forestry and environmental competences. A membership organisation composed of:
 - National Agency's:
 - Organising and giving structure to the certification process on a transparent way
 - Taking care of knowledge sharing
 - European or National organisations:
 - Everyone who's involved in recognition of craftsmanship of nature workers

What is EFESC?

- **First General Assembly in Ossiach 2011**

Statutes

First version of the handbook

Election of the members

Start up secretariat (KWF)

Accreditation of the National Agency's:

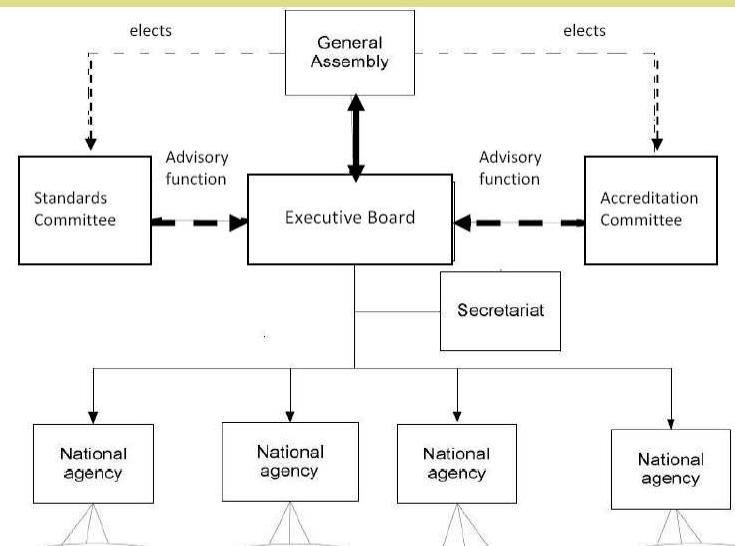
Centro Forestal Catalunya, KWF, IPC Groene ruimte, Centre Forestier de la Bastide de Jordan, Bundesministerium fur Landwirtschaft, Forsten und Umwelt, Roumania, EFESC Italy, City & Guilds UK, Inverde

Others : Tjech Republic, Poland, Portugal, Latvia,...

Executive Board: Tom Embo, Chairman (inverde); Rosa Ricart (CFTC); Roland Tromp (IPC Groene Ruimte)

Standards Committee: Kris Hofkens and Klaus Klugmann (Chairpersons); Josep Anglada; Wouter Schulp; Chris Hughes ; Josef Stampfer ; Giorgio Behmann dell'Elmo; Helmut Keller;...

Accreditation Committee: Joachim Morat (Chairperson); Christian Salvignol; Rudy Burgherr



Abbreviations:

GA = General Assembly
EB = Executive Board
S = Secretariat
TU = training unit

AB = Accreditation Committee
SB = Standards Committee
NA = National Agency

EFESC: Quality-control



Audits of National Agency's

- 2016: Spain, Germany and Roemenia
- 2017: France and Belgium
- 2018: the Netherlands, Italy en Austria

Inverde as EFESC National Agency in Belgium

EFESC audit NA Belgium



- Results audit Inverde (sept. 2017):
 - Strong points:
 - A first certified Efesc assessment centre in Wallonië
 - Strong cooperation between different training and assessment centres

EFESC audit NA Belgium



- Results audit Inverde (sept. 2017):
 - Recommendations:
 - Adaptation of result multiple choice-theory-test to succeed: 50% -> 70%
 - Will be implemented starting autumn 2018

EFESC audit NA Belgium



- High efficiency by development of an app. to do the assessments on tablets
- Less faults and administration!
- Obligation to have an ECC-certificate to work with a chainsaw in public forests....

-> many assessments



BREVET? GOED BEZIG!



Chris Heylen
Bosmaaier • ECC 1 • Eénassige trekker
Veilig werken langs de weg • Tractor

Bert Aerts
Bosmaaier
ECC 1

Ismail Arslan
Bosmaaier • ECC 2
Eénassige trekker • Tractor

GOED GEDAAN!

1.691

keer vakmanschap door
arbeiders en ploegbazen

94%

slaag-
percentage

19

verschillende
brevetten

Volgende uitdaging is het juiste brevet voor de juiste persoon
(groenarbeider in regieploeg, een specialist of een vliegende groenarbeider)



Vlaanderen
is natuur

**AGENTSCHAP
NATUUR & BOS**



Vlaanderen
is natuur

erde 
groen- en natuurbeheer

National Agency of Belgium

- Op dit ogenblik 3 erkende examencentra:

- Inverde:

- 5 interne ECC-beoordelaars
- 6 externe ECC-beoordelaars



Maatschappelijke zetel Brussel
Herman Teirlinckgebouw
Havenlaan 88 bus 75
B-1000 Brussel
T +32 2 658 24 94
F +32 2 658 24 95
info@inverde.be
BE 0887 269 985

- Syntra-West / Skilliant:

- 3 gecertificeerde ECC-beoordelaars



Skilliant
Spoonwegstraat 14
8200 Sint-Michiels
T +32 50 40 30 80
info@syntrawest.be
www.syntrawest.be

- Le Forem:

- 2 gecertificeerde ECC-beoordelaars



Centre de compétence

Les Silos de la Dendre
47, rue de la Station
7800 Ath

Tél. 068/25 11 76

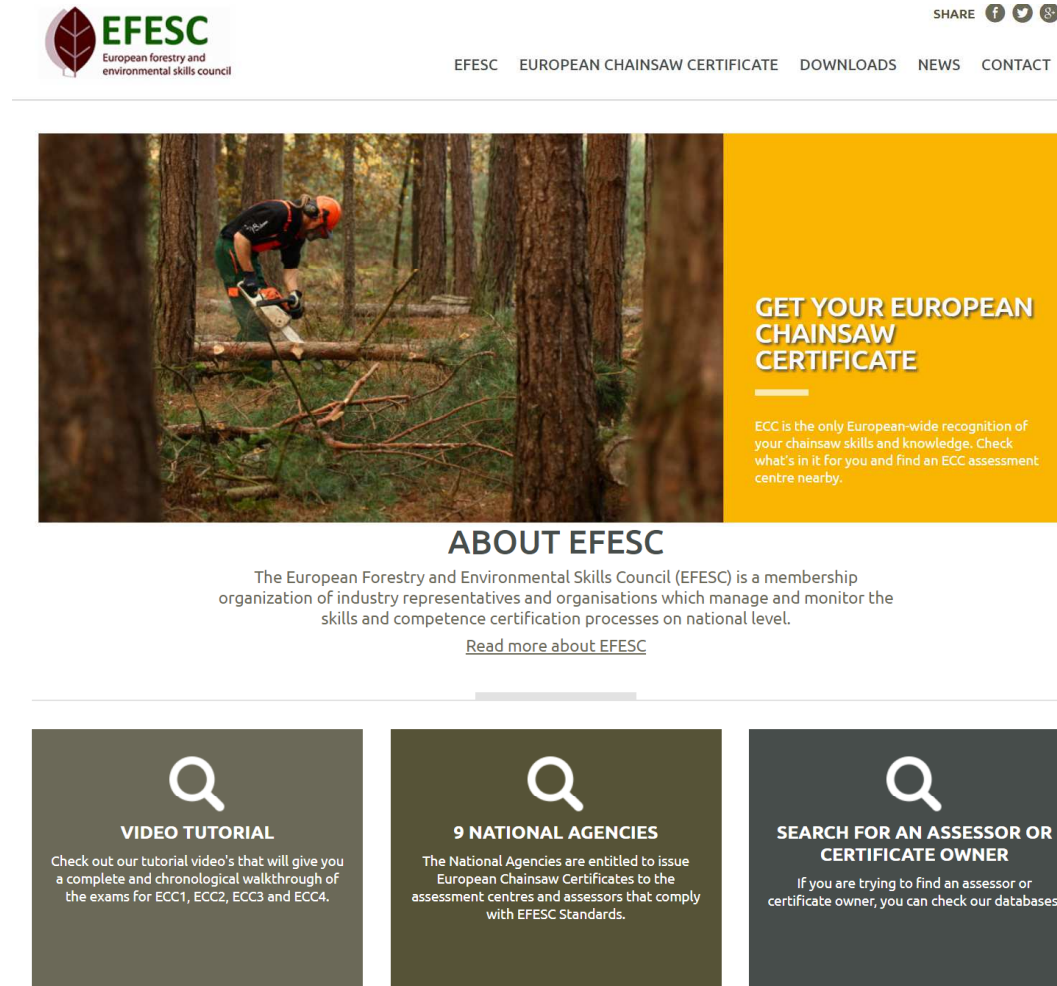
secteurs-verts.info@forem.be

Results: number of certificates:

<u>Land</u>	<u>ECC1</u>	<u>ECC2</u>	<u>ECC3</u>	<u>ECC4</u>	<u>Totaal aantal certificaathouders</u>
België	905	342	33	19	905
Duitsland	737	730	730	676	737
Frankrijk	951	376	94	3	951
Italië	165	41	40	32	165
Nederland	120	72	19		120
Oostenrijk	198	?	?	?	198
Roemenië	358	358	355	44	358
Spanje	238	104	17		244
Totalen:	3.672	2.023 + ?	1.288 + ?	774 + ?	3.672
	Ca 7.757 + ? certificaten				




EFESC website

- All info on: <https://efesc.org/>



The screenshot shows the EFESC website homepage. At the top left is the EFESC logo with the text 'European forestry and environmental skills council'. To the right are social media share icons and a navigation menu with links: EFESC, EUROPEAN CHAINSAW CERTIFICATE, DOWNLOADS, NEWS, and CONTACT. The main banner features a photo of a person using a chainsaw in a forest, with a yellow overlay on the right containing the text 'GET YOUR EUROPEAN CHAINSAW CERTIFICATE' and a brief description of the ECC. Below the banner is the 'ABOUT EFESC' section, which describes the organization as a membership organization of industry representatives and organizations that manage and monitor certification processes. Below this are three dark grey boxes, each with a magnifying glass icon and a search-related title: 'VIDEO TUTORIAL', '9 NATIONAL AGENCIES', and 'SEARCH FOR AN ASSESSOR OR CERTIFICATE OWNER'. Each box contains a short paragraph of text.

EFESC
European forestry and environmental skills council

SHARE   

EFESC EUROPEAN CHAINSAW CERTIFICATE DOWNLOADS NEWS CONTACT

GET YOUR EUROPEAN CHAINSAW CERTIFICATE

ECC is the only European-wide recognition of your chainsaw skills and knowledge. Check what's in it for you and find an ECC assessment centre nearby.

ABOUT EFESC

The European Forestry and Environmental Skills Council (EFESC) is a membership organization of industry representatives and organisations which manage and monitor the skills and competence certification processes on national level.

[Read more about EFESC](#)

VIDEO TUTORIAL

Check out our tutorial video's that will give you a complete and chronological walkthrough of the exams for ECC1, ECC2, ECC3 and ECC4.

9 NATIONAL AGENCIES

The National Agencies are entitled to issue European Chainsaw Certificates to the assessment centres and assessors that comply with EFESC Standards.

SEARCH FOR AN ASSESSOR OR CERTIFICATE OWNER

If you are trying to find an assessor or certificate owner, you can check our databases.

NEWS

EFESC website

- All info on: <https://efesc.org/>
 - Look for NA's
 - Verify Certificates/Holders



EFESC

EUROPEAN CHAINSAW CERTIFICATE

FIND CERTIFICATE HOLDERS, ASSESSORS AND ASSESSMENT CENTRES

CERTIFICATE HOLDERS

ASSESSORS

ASSESSMENT CENTRES

SEARCH

embo

AND SELECT A COUNTRY

Belgium

Name	Appliance	Level	Certificate number	Obtained on	Country
Tom Embo	Kettingzaag	ECC1	B1/69.12.01-003.45	maandag, augustus 21, 2017	Belgium

Last updated: 23/01/2018

EFESC website

- All info on: <https://efesc.org/>
 - Look for NA's
 - Verify Certificates/Holders
 - Find certified assessors and assessment centres
 - Downloadpage with most recent documents
 - Video's of assessment run through:
 - Different levels
 - Different languages
 - NA's cheer information

Update: Ammended proposals since 2017

General Assembly nov 2017

- Improvement on EFESC handbook:
 - Right terms, ECS/ECC, audit and verificatie..
 - Adjusting appendix 4: EFESC definitions
 - Adjusting appendix 5: EFESC verificatie form
- Lay-out of EC-Standards changes:
 - The 'pure' standards get separated from assessment tasks and criteria
 - They stay in the same document to keep it binding

GA nov 2017

<p><u>To include in all translations:</u></p> <p>This is a translation of the original English version of the EFESC handbook and its appendices. This translated version is subordinate to the original English version.</p>	
EUROPEAN CHAINSAW STANDARDS version 2017	
ECS 1: Chainsaw Maintenance and Crosscutting Techniques	
What the chainsaw operator must be able to do: chainsaw maintenance and crosscutting with a chainsaw with recommended guide bar size 30-38cm	
ECS1-1	Take care of yourself (PPE) and others around you at work - Chainsaw operator to wear appropriate PPE for maintenance.
1:01	Safety boots
1:02	Eye (& ear) protection as appropriate
1:03	Personal /Squad First Aid Kit - on <u>every</u> work site
1:04	Gloves appropriate to task
ECS1-2	Routine / daily CHAINSAW MAINTENANCE - Chainsaw operator must be able to check function of safety features: (chainsaw off)
2A:1	Chain brake
2A:2	Anti-vibration mounts
2A:3	Safety chain
2A:4	Throttle lock
2A:5	Exhaust away from the operator
2A:6	Chain catcher
2A:7	Legal symbols: Head/eye/ear defender
2A:8	Right hand guard
2A:9	Left hand guard
2A:10	Chain/Bar cover
2A:11	Functional clearly marked on/off switch
	Chainsaw operator must be able to sharpen whole saw chain:
2B:1	Chain checked for damage and compatibility with bar and sprockets
2B:2	Cutters sharpened using file of correct size with handle fitted & correct top/side plate angles
2B:3	Equal length of cutters maintained
2B:4	Filing burrs removed if needed
2B:5	Height and profile of depth gauges checked / set
	Chainsaw operator must be able to maintain guide bar:
2C:1	Straightness of bar checked



Algemene vergadering nov 2017

2C:2	Identify uneven/damaged/blued/cracked rails
2C:3	Burrs removed and edges chamfered/curved
2C:4	Groove (depth checked) and oil holes cleared
2C:5	Sprocket nose greased if applicable
2C:6	Bar turned to reduce wear
	Chainsaw operator must be able to undertake other maintenance tasks:
2D:1	Drive sprocket inspected
2D:2	Chain brake cleaned & inspected
2D:3	Chainsaw operator to correctly re-assemble chain, bar and side plate
	Chainsaw operator must be able to inspect & clean air filter:
2E:1	Remove debris from around filter
2E:2	Remove and clean filter protecting carburetor intake
	Chainsaw operator must be able to clean, inspect & re-tension starter recoil mechanism:
2F:1	Remove starter cover, clear air ways, check cord wear
2F:2	Release and re-tension cord and coil spring
2F:3	Check handle/pull toggle for security
ECS1-3	Take care of yourself (PPE) and others around you at work - Chainsaw operator to wear appropriate PPE for crosscutting
3:01	Chainsaw safety trousers
3:02	Chainsaw safety boots
3:03	Safety helmet if necessary
3:04	Eye & ear protection
3:05	Gloves appropriate to task
3:06	Non-snag outer clothing
3:07	Whistle/Mobile/Radio
	Planning the work including what to do if there is an emergency - Chainsaw operator must be able to identify hazards relevant to the site and timber to be cut:
	RISK ASSESSMENT - walk site, METHOD STATEMENT – verbal, EMERGENCY PLANNING - check information
ECS1-4	OPERATIONAL SAFETY CHECKS - Chainsaw operator must be able to check chainsaw for condition/sharpness etc and pre-use safety:
4:01	Cold/Warm start method (ground/'leg lock')
4:02	Safe start distance from fuel (min.1m or greater according to national guidance, no spillage, gases released)
4:03	Chain brake tested with saw running
4:04	Saw checked for oiling (e.g. oil throw test or oil present on drive links)
4:05	Chain not moving when throttle released (no chain creep)

Algemene vergadering nov 2017

4:06	On/off switch is working (pull choke to stop if not, then label not to be used)
4:07	Chain tension 'warm' re-checked
ECS1-5	MEET LEGAL & SITE ENVIRONMENTAL REQUIREMENTS IN ACCORDANCE WITH NATIONAL STANDARDS - Chainsaw operator must be able to check specifications:
5:01	Protection of fauna, flora, wildlife, waterways, site specifications etc, regards pollution/damage, selection of fuel storage:
5:02	Use bio-oils whenever possible
5:03	Prevent waste or dispose of it without causing further damage, in accordance with the regulations, especially according to the right chains for recyclable waste
ECS1-6	INSPECT TIMBER & USE SAFE CROSSCUT METHODS
6:01	Walk site, check timber
6:02	Safe stance, well balanced
6:03	Bar aligned to maintain accuracy
6:04	Head/neck are not allowed across of line of chain
6:05	Use of throttle to cut safely and efficiently
6:06	Left thumb around top handle
6:07	Use of boring to initiate cuts where access is limited
6:08	Sequence of cuts to prevent saw becoming trapped or uncontrolled timber movement i.e. splitting
6:09	Tension and compression cuts should meet
6:10	Chain brake used appropriately: when walking with the engine running, if the saw has to be put down whilst moving cut material or before taking a hand off the saw
6:11	Safe withdrawal of saw from the cut
6:12	Ergonomics: straight back, use of legs to control saw, bending at knees
ECS1-7	SELECT & USE APPROPRIATE AID TOOLS-Chainsaw operator must be able to use appropriate aids to handle / move products:
7:01	Correct stance during lifting
7:02	Avoiding excessive lifting by levering, sliding, rolling etc
7:03	Site left tidy & safe
What the chainsaw operator must know and understand: ECS1	
1	Demonstrate knowledge of how to identify hazards and comply with the control measures of risk assessments
2	Demonstrate knowledge of emergency planning and procedures
3	Demonstrate knowledge on why the PPE is required and what kind of PPE that is required
4	Demonstrate knowledge of carrying out daily and weekly maintenance, settings and pre-start checks as per manufacturers' recommendations
4:01	Demonstrate knowledge of information required to select a replacement chain for a given saw
4:02	Demonstrate knowledge of reasons for chain maintenance



Algemene vergadering nov 2017

4:03	Demonstrate knowledge of reasons for maintaining guide bar
4:04	Demonstrate knowledge on sprocket replacement
4:05	Demonstrate knowledge on clutch components
4:06	Demonstrate knowledge on power unit and covers and inspect for damage
4:07	Demonstrate knowledge on condition of spark plug
4:08	Demonstrate knowledge on chain tension
4:09	Demonstrate knowledge on air filter and compartment and explain the purpose of cleaning
4:10	Demonstrate knowledge on cord condition and recoil starter mechanism
4:11	Demonstrate knowledge on fuel filter maintenance
4:12	Demonstrate knowledge on condition and pre-use operational safety checks on the chainsaw
4:13	Demonstrate knowledge on chain oiling system and on their function
4:14	Demonstrate knowledge of symptoms associated with poor cutting performance
5	Demonstrate knowledge of maintaining the safety and security of chainsaw(s) and other equipment
6	Demonstrate knowledge of the safety considerations required during crosscutting.
7	Demonstrate knowledge of maintaining effective teamwork when working with others
8	Demonstrate knowledge of how to remove a trapped saw
9	Demonstrate knowledge of the alternative methods of carrying out a boring cut and the safeguards required
10	Demonstrate knowledge of the risks associated with using long chainsaw bars to cut small diameter timber
11	Demonstrate knowledge of methods required for cross cutting timber of greater diameter than the chainsaw bar
12	Demonstrate knowledge of the implications of terrain, ground conditions, season, weather and species
13	Demonstrate knowledge of causes of, and how to prevent, potential pollution, environmental damage
14	Demonstrate knowledge of how to identify your own capabilities and limitations as operator
15	Demonstrate knowledge of the principles of a safe effective stance whilst crosscutting under guidebar length in diameter
16	Demonstrate knowledge of how to apply ergonomic working methods and the implications of manual handling regulations
17	Demonstrate knowledge of how to move or roll timber by hand and with mechanical assistance
18	Demonstrate knowledge regarding first aid and chainsaw use
19	Demonstrate knowledge of how to identify tension and compression in timber
20	Demonstrate knowledge of the methods and safeguards required when dismantling timber (e.g. hardwood or similar tops) with vertically aligned stems, branches or sections
21	Demonstrate knowledge of precautions to take to avoid the danger of logs rolling

GA nov 2017

ECC1 assessment: EFESC prescriptions of tasks and criteria

To obtain a European chainsaw certificate level 1, you must pass an assessment in which your skills and knowledge, both theoretical and practical, are tested. With this certificate you can prove your competence to work according to the European minimum Chainsaw Standards level 1.
If national standards or assessment procedures are more stringent and ECS1 is covered, an ECC1 label can be added to the current certificate by a certified assessment center.

During the assessment, the following minimum tasks and criteria must be checked objectively by a certified assessor.
Training and assessing must be separated: the assessor may not be familiar with the candidate.

Pre-requisite to ECC1 assessment: none

ECC1 assessment tasks:

Theoretical test:

- Written or oral

Practical Test:

- Recommended guide bar size 30-38cm & maximum time allowed 60min
- Candidate has to sign RA, shows ID and wears appropriate PPE for maintenance and crosscutting
- Candidate has to check function of safety features (chainsaw off)
- Candidate has to sharpen whole saw chain
- Candidate has to maintain guide bar
- Candidate has to undertake other maintenance tasks
- Candidate has to inspect & clean air filter
- Candidate has to clean, inspect & re-tension starter recoil mechanism
- Candidate has to identify hazards relevant to the site and timber to be cut
- Candidate has to perform timber Inspection, Risk Assessment (RA), work planning and emergency planning
- Candidate has to check chainsaw for condition/sharpness etc and pre-use safety
- Candidate has to check environmental specifications
- Candidate has to crosscut timber under guide bar length, according to the measurements given with some moderate tension & compression present:
A minimum of 10 cross cuts need to be demonstrated to standard using both upper & lower nose of the guide bar, including **a minimum of 2 vertical boring cuts**.
- Candidate has to demonstrate an ergonomic use of appropriate aids to handle / move timber

GA nov 2017

ECC1 assessment criteria:	
Theoretical test:	
- Minimum score to succeed 70%	
Practical Test:	
IF ONE OF THE FOLLOWING POINTS IS NOT FULFILLED, THE CANDIDATE CAN NOT PASS ECC level 1:	
none	- the candidate wears appropriate PPE for maintenance and crosscutting
none	- the candidate checks function of chainbrake, left hand guard and throttle lock
none	- the candidate uses a sequence of cuts to prevent saw becoming trapped or uncontrolled timber movement i.e. splitting
IF, AFTER ONE WARNING, MORE THAN THE MAXIMUM NUMBER OF PERMITTED ERRORS BELOW ARE MADE, THEN THE CANDIDATE CAN NOT PASS ECC level 1:	
1	- the candidate checks the chain catcher
2	- the candidate sharpens the cutters using file of correct size with handle fitted & correct top/side plate angles
1	- the candidate checks / set the height and profile of depth gauges
1	- the candidate identifies uneven/damaged/blued/cracked rails
1	- the candidate performs timber Inspection, Risk Assessment (RA), work planning and emergency planning
2	- the candidate has his/her head/neck across of line of chain
Max. number of errors allowed	

General Assembly nov 2017

- Improvement on EFESC handbook:
 - Right terms, ECS/ECC, audit and verificatie..
 - Adjusting appendix 4: EFESC definitions
 - Adjusting appendix 5: EFESC verificatie form
- Lay-out of EC-Standards changes:
 - The 'pure' standards get separated from assessment tasks and criteria
 - They stay in the same document to keep it binding
- Most important change in the assessment tasks is in ECC3:
 - The obligation to hang-up a tree during the ECC3-assessment disappears
 - If a tree gets hung-up -> Candidate must be able and solves this problem on a safe way
 - Candidate has to use at least one winch set-up (e.g.: kabel-supported felling)

Work for Standards Committee this year:

- Development of a pre-test to ECC3 for very experienced chainsaw users.
 - Try-out on next assessorsworkshop (may, Spain?)
- Development of a new Standard:
‘Forest Machine Operator’

Thanks for your attention!
Any questions?